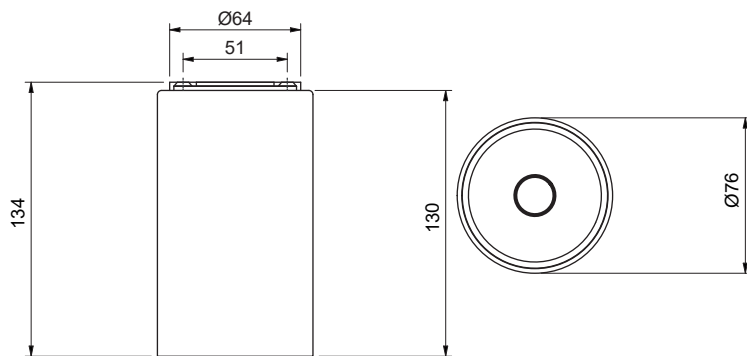


# ZTA.70 Bay

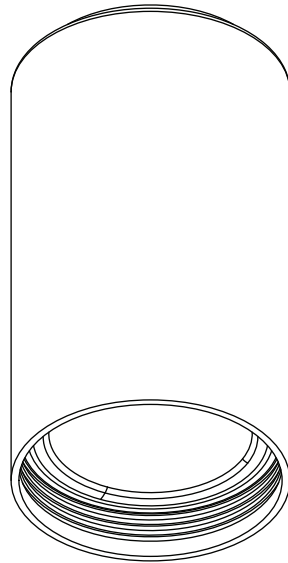


Order Code	ZTA.70 Bay.light source.beam.finish
Example	ZTA.70 Bay.XOB.medium.RAL9010



- Materials: Aluminium
- Light source: Xicato XOB COB LED  
Xicato XTM 19mm LES LED Module
- Finish: Anodised or painted to any RAL colour
- Locking: N/A
- Available Tilt: N/A
- Weight: 0.5kg
- Description: ZTA is a truly unconstrained new product range, be that in choice of light source, optic, paint finish, control system or how it's mounted. With a simpler aesthetic, it offers versatility and a product that is truly maintainable, re-manufacturable and ultimately recyclable.
- Accessories: Beam angles dependant on light source. See website for full details.  
Ø70mm lenses and louvres available.  
Zoom options (16.6° - 41.2° or 22.9° - 39.3°).

# ZTA.70 Bay options



ZTA.70 Bay



Xicato XTM 19mm

Dimming Option

0-10V, DALI, DMX,  
mains or wireless

CRI ≥ 80 2700lm (Initial)	CRI ≥ 95 2140lm (Initial)
------------------------------	------------------------------

CCT

2200K, 2700K, 3000K,  
3500K, or 4000K  
(5600K XTM only)

Beam Options

Narrow (22.7°)  
Medium (27.4°)  
Flood (37.4°)  
Wide Flood (43.5°)



Xicato XOB 6mm

Dimming Option

0-10V, DALI, DMX,  
mains or wireless

CRI ≥ 90 873lm (Initial @ 3000k)	CRI ≥ 95 798lm (Initial @ 3000K)
--	--

CCT

2700K, 3000K, 3500K,  
or 4000K

Beam Options

Very Narrow (10.9°)  
Medium (22°)  
Flood (35.5°)  
Flood 2 (49°)  
Wide Flood (66°)



Xicato XOB 9.8mm

Dimming Option

0-10V, DALI, DMX,  
mains or wireless

CRI ≥ 90 1513lm (Initial @ 3000k)	CRI ≥ 95 1341lm (Initial @ 3000K)
---	---

CCT

2700K, 3000K, 3500K,  
or 4000K

Beam Options

Narrow (15.1°)  
Medium (22°)  
Flood (31.2°)  
Flood 2 (44.3°)  
Wide Flood (64.5°)  
Zoom (16.6° to 41.2°)



Xicato XOB 14.5mm

Dimming Option

0-10V, DALI, DMX,  
mains or wireless

CRI ≥ 90 3066lm* (Initial @ 3000k)	CRI ≥ 95 2745lm* (Initial @ 3000K)
--	--

CCT

2700K, 3000K, 3500K,  
or 4000K

Beam Options

Narrow (22°)  
Medium (24.5°)  
Flood (31.7°)  
Flood 2 (45.7°)  
Wide Flood (60.9°)  
Zoom (22.9° to 39.3°)

\*note that output is lowered slightly when used with  
an X1D 2580lm for 90 CRI and 2310 for 95.