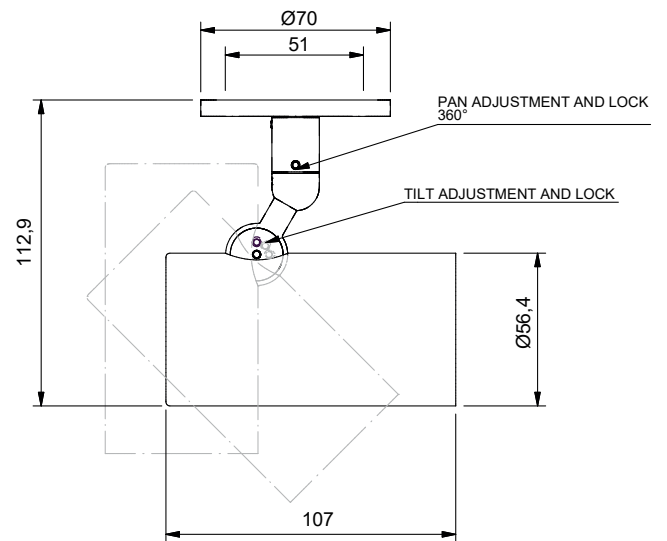


ZTA.50 Surface

STOANE LIGHTING

EQUIPMENT DESIGN + MANUFACTURE



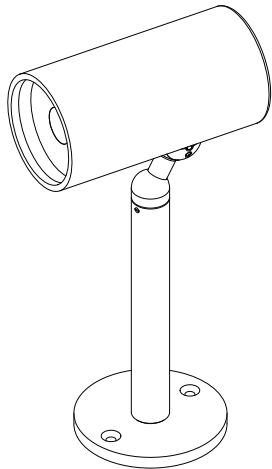
Order Code	ZTA.50 Surface.light source.beam.finish
Example	ZTA.50 Surface.XOB.medium.RAL9010

- Materials: Aluminium
- Light source: Osram Oslon Square LED
Xicato XOB 6mm, or 9.8mm LED
Xicato XTM 19mm LES LED Module
- Finish: Anodised or painted to any RAL colour
- Locking: 2mm Allen key required
- Available Tilt: $\pm 120^\circ$
- Weight: 0.4kg
- Description: ZTA is a truly unconstrained new product range, be that in choice of light source, optic, paint finish, control system or how it's mounted. With a simpler aesthetic, it offers versatility and a product that is truly maintainable, re-manufacturable and ultimately recyclable.
- Accessories: Beam angles dependant on light source. See website for full details.
 $\varnothing 50$ mm lenses and louvres available.
Zoom option available ($13.7^\circ - 48.1^\circ$).
19mm Wall wash available ($81.3^\circ \times 53.7^\circ$).

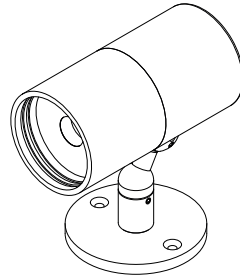


ZTA.50 Configurations

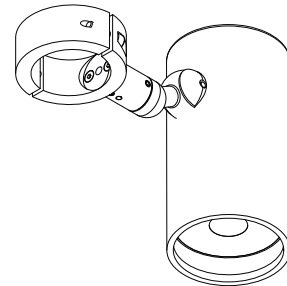
Mount Options



Stem Mount

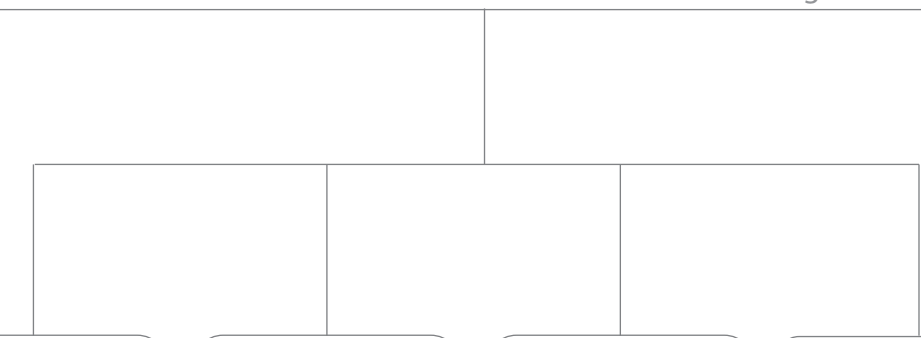


Standard



Clamp Mount

...more configurations are possible



Xicato XOB 6mm

Dimming Option

0-10V, DALI or
Wireless (via XID)

CRI ≥ 90 875lm <small>(Initial @ 3000k)</small>	CRI ≥ 95 800lm <small>(Initial @ 3000K)</small>
---	---

CCT

2700K, 3000K, 3500K,
or 4000K

Beam Options

Very Narrow (13.9°)
Narrow (14.7°)
Medium (24.1°)
Flood (36.7°)
Wide Flood (51.7°)
Zoom (13.7°-48.1°)



Xicato XOB 9.8mm

Dimming Option

0-10V, DALI or
Wireless (via XID)

CRI ≥ 90 1513lm <small>(Initial @ 3000k)</small>	CRI ≥ 95 1341lm <small>(Initial @ 3000K)</small>
--	--

CCT

2700K, 3000K, 3500K,
or 4000K

Beam Options

Very Narrow (17.4°)
Narrow (18.8°)
Medium (25.3°)
Flood (34.1°)
Wide Flood (46.6°)



Oslon Star

Dimming Option

0-10V, DALI or
Wireless (via XID)

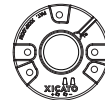
CRI ≥ 90
252lm (Initial)

CCT

2700K, 3000K, 3500K,
or 4000K

Beam Options

Very Narrow (3.3°)



19mm XTM
(Wallwash Only)

Dimming Option

0-10V, DALI or
Wireless (via XID)

CRI ≥ 80 1630lm (XTM Initial)	CRI ≥ 95 1400lm (XTM Initial)
----------------------------------	----------------------------------

CCT

2200K, 2700K, 3000K,
3500K, 4000K or
5600K

Beam Options

Wall Wash (81.3° x 53.7°)